

**Mission Statement:**






“Inspire all students to achieve personal excellence, pursue world-class standards and be self-directed, lifelong learners.”



# Quality Profile

## 2020-2021

## STATISTICS BY GRADE LEVEL

	HIGH SCHOOL	MIDDLE SCHOOL	ELEMENTARY SCHOOL
Graduation Rate	98.05%		
Percent of students enrolled in classes with the potential to earn...	College Credit 27%	High School Credit 60%	
High school credits earned by middle school students		173	
Percent of students reading at grade level by mid-year			
Course offerings in the arts	11	13	15
Hourse invested by students for community service	7,036	200	
Percent of students participating in an extracurricular activity	60%	50%	21%
Scholarship money awarded	\$63,500		
Number of AP courses	12		
Percent of teachers that hold a Master's Degree or higher	100%	76.3%	75.6%
Number of grant funded programs	19	3	4
Attendance Rate	94%	94%	96%

# Quality Profile

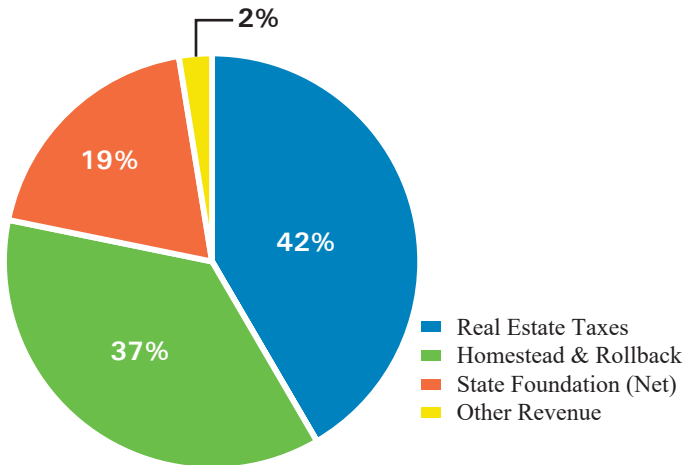
2020-2021



## FINANCES

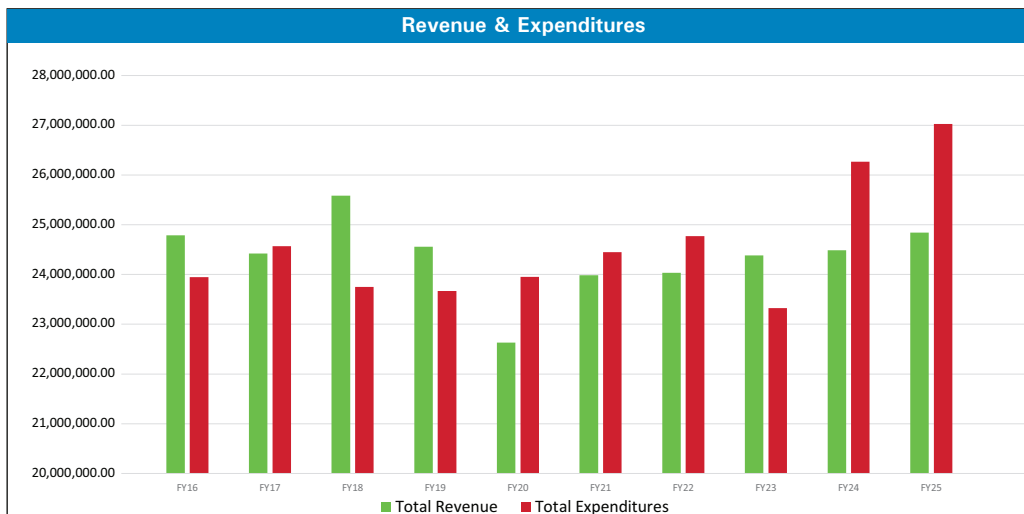
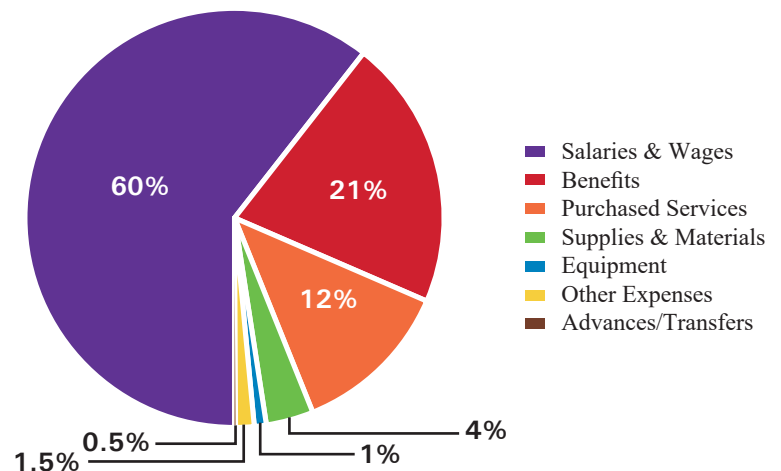
### Revenue

Real Estate Taxes	9,975,605.00
Homestead & Rollback	8,781,366.00
State Foundation (Net)	4,611,359.00
Other Revenue	615,000.00
<b>Total Revenue</b>	<b>23,983,330.00</b>



### Expenditures

Salaries & Wages	14,942,382.00
Benefits	5,162,439.00
Purchased Services	3,060,397.00
Supplies & Materials	902,618.00
Equipment	228,901.00
Other Expenses	352,242.00
Advances/Transfers	20,000.00
<b>Total Expenses</b>	<b>24,668,979.00</b>



### GRANT FUNDS RECEIVED

**Federal:** \$1,824,882.32 (Includes \$239,409.08 in Coronavirus Relief & CARES Act Grants)

**State:** \$8,033.43

**Other:** \$3,500

**TOTAL:** \$1,836,415.75

**YEARS SINCE THE DISTRICT  
HAS BEEN ON THE BALLOT  
FOR AN OPERATING LEVY**

**45**

**COST PER PUPIL: \$16,042.95**